

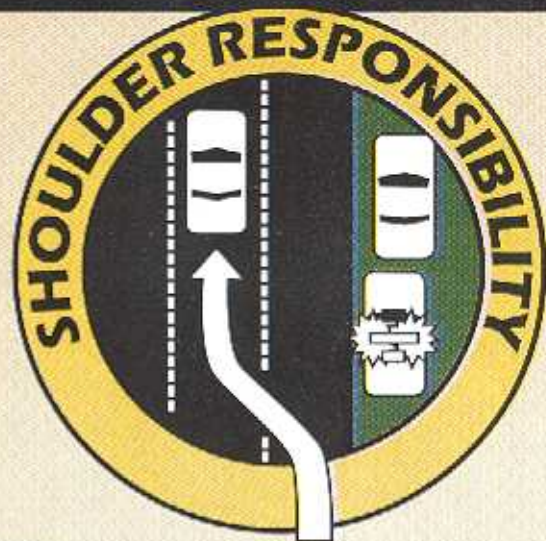
**PLEASE
GIVE US ROOM TO WORK**



**MOVE OVER.
SLOW DOWN.
IT'S THE LAW!**



A DIVISION OF THE
DEPARTMENT OF HIGHWAY SAFETY AND MOTOR VEHICLES



FLORIDA'S MOVE OVER LAW

- Protects law enforcement officers, emergency workers, and tow truck drivers stopped along roadways while performing their jobs;
- Requires motorists to move over when a patrol car, emergency vehicle, or tow truck/wrecker is stopped on the side of the road with lights flashing.

MOTORISTS ARE REQUIRED TO

- Approach the emergency vehicle with caution;
- Change lanes away from the emergency vehicle **IF** traveling on a multi-lane roadway **AND** able to move over safely; **OR**
- Slow down while maintaining a safe speed, but be careful **NOT** to impede or block the flow of traffic.

**VIOLATORS OF THE MOVE OVER LAW
WILL BE ISSUED A CITATION!**

For more information, please visit: www.fhp.state.fl.us

Specific provisions of the Move Over Law can be reviewed under Section 316.126(1)(b), Florida Statutes. Available on-line at www.leg.state.fl.us

**For more information, contact the
Florida Highway Patrol • Office of Public Affairs
fhp@hsmv.state.fl.us or 850-410-0999**